

Online UPS EPOS SERIES 10KVA-200KVA



EPOS SERIES



Data Center



Networking



Computer



Banking



Generator
compatible

DSP technology guarantees high reliability

A Digital Signal Processor (DSP) technology digitizes the data and mathematically manipulates them to provide an improved solution with higher

Output power factor 1 (only for 10K-80K)

For critical applications, this 3-phase online UPS with output power factor 1.0 ensures higher efficiency and advanced performance.

Active power factor correction in all phases

Power factor correction is active in all phases and it can improve the efficiency of input.

Dual Inputs

Galleon II 33 series is also available for optional dual inputs to support various inputs to have the flexibility for system configuration.

Very powerful charger

Galleon II 33 Series is a built-in 12A charger for 10K-40KVA models and 24A for 60K/80KVA models. It's to support very long runtime applications when connecting to the external battery cabinet's big capacity.

50Hz/60Hz frequency converter mode

Loch output frequency at 50Hz or 60Hz to suit power sensitive equipment.

ECO mode operation for energy saving

Eco mode improves the efficiency up to 98% to cut energy usage & cost. In this mode, loads are supplied by the mains directly. While mains failure, the UPS will constantly supply the power to the connected

Emergency power-off function (EPO)

In case of any emergency and fire, the EPO control mechanism can instantly shut down the system.

Adjustable charging current

Users can adjust charging current via LCD setting based on applications.

High overload capability

Supporting 110% overload capacity for 60 min and up to 1 min overload condition at 150% load.

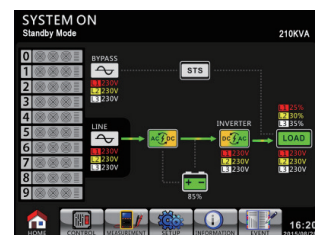
Optional parallel operation with common battery

The system can be operated in parallel, increasing the capacity and performance. This parallel UPS system can also share common battery packs, which

Adjustable battery design

The number of connected batteries can be adjusted flexibly based on different power demands, and this feature can allow UPS to keep running even when some battery packs are damaged.

Optional 4.3" touch LCD for EPOS 10K-80K models



FORTRON/SOURCE

MODEL	EPOS 3/1 10KL	EPOS 3/1 20KL	EPOS 3/3 10K(L)	EPOS 20K(L)	EPOS 3/3 30KL	EPOS 3/3 40KL	
PHASE	3-Phase in/ 1-Phase out with Neutral			3-phase in/3-phase out with Neutral			
CAPACITY	10KVA/10KW	20KVA/20KW	10KVA/10KW	20KVA/20KW	30KVA/30KW	40KVA/40KW	
PARALLEL CAPABILITY	3						
INPUT							
Nominal Voltage			3 x 400 VAC (3Ph+N)				
Voltage Range			110-300 VAC @ 50% load 176-276 VAC @ 100% load				190-520 VAC(3-phase) @ 50% load 305-478 VAC(3-phase) @ 100% load
Frequency Range			46~54Hz or 56~64Hz				
Power Factor			≥ 0.99 @ 100% load				
OUTPUT							
Output Voltage			208*/220/230/240 VAC (Ph-N)				3 x 360*/380/400/415 VAC (3Ph+N)
AC Voltage Regulation (Batt. Mode)			± 1%				
Frequency Range (Synchronized Range)			46~54Hz or 56~64Hz				
Frequency Range (Batt. Mode)			50 Hz ± 0.1 Hz or 60 Hz ± 0.1 Hz				
Current Crest Ratio			3:1 (max.)				
Harmonic Distortion			≥ 2 % @100% Linear Load; ≥ 5 % @100% Non-linear Load				≥ 2 % THD @100% Linear Load; ≥ 5 % THD @100% Non-linear Load
Transfer Time	AC Mode to Batt. Mode		Zero				
	Inverter to Bypass		zero (when phase lock fails, <4ms interruption occurs from inverter to bypass)				Zero
Waveform (Batt. Mode)			Pure Sine wave				
Overload	AC Mode		100-110% for 60 min, 110-125% for 10 min, 125%~150% for 1min, >150% immediately				
	Battery Mode		100-110% for 60 min, 110-125% for 10 min, 125%~150% for 1min, >150% immediately				
EFFICIENCY							
AC Mode			95.5%				
ECO Mode			98.5%				
Battery Mode			94.5%				
BATTERY							
Long-run Model	Battery Type		Depending on the capacity of external batteries				
	Numbers	20 PCS	32~40 pcs (Adjustable)	20 PCS	32 ~ 40 PCS		
	Charging Current (max.)	1.0~12.0A ± 10% (Adjustable)	2.0~24.0A ± 10% (Adjustable)	1A ~ 12A (Adjustable)			
	Charging Voltage	+/-13.65 VDC* N ± 1% (N = 10)	+/-13.65 VDC* N ± 1% (N = 16~20)	+/-136.5 VDC ± 10% +/-13.65V*N (N=16~20)			
Standard Model	Numbers		20 PCS		40 PCS		
	Charging Current(max.)		2A ± 10%		2A ± 10%		
	Charging Voltage		+/-136.5 VDC ± 10%		+/-218 VDC		
INDICATORS							
LCD Display			UPS status, Load level, Battery level, Input/Output voltage, Discharge timer, and Fault conditions				
PHYSICAL							
Long-run Model	Dimension, D x W x H (mm)		626 x 250 x 827		630 x 250 x 826		815 x 300 x 1000
	Net Weight (kgs)		46,5	46,5	28	43	60
ENVIRONMENT							
Operation Temperture			0-40°C				
Operation Humidity			< 95% and non-condensing				
Noise Level			Less than 55dB @ 1 Meter		Less than 58dB @ 1 Meter		Less than 70dB @ 1 Meter
MANAGEMENT							
Smart RS-232 / USB			Supports Windows® 2000/2003/XP/Vista/2008, Windows® 7/8/10, Linux and MAC				
Optional SNMP			Power management from SNMP manager and web browser				

*If output voltage is set as 3 x 360VAC, the output power of the unit will be de-rated to 90%.
Product specifications are subject to change without further notice.



Backup Time Table for EPOS Series					
BATTERY BANK		Backup Time Table (min)			
		25%	50%	75%	100%
EPOS 3/1 10KL	+1BB+120V 18Ah (12V-9Ah x 40)	49.8	22.3	13.2	9.0
EPOS 3/3 10KL	+2BB+120V 18Ah	110	50.5	30.3	22.0
EPOS 3/1 20KL	+1BB+240V 18Ah (12V-9Ah x 80)	49.3	21.9	13.3	9.5
EPOS 3/3 20KL	+2BB+240V 18Ah	109	49.9	30.9	22.8
EPOS 3/3 30KL	+1BB+240V 18Ah (12V-9Ah x 80)	29.9	13.1	7.7	5.1
	+2BB+240V 18Ah	69.0	30.4	18.9	13.5
EPOS 3/3 40KL	+1BB+240V 18Ah (12V-9Ah x 80)	21.5	9.1	4.9	3.1
	+2BB+240V 18Ah	49.3	21.9	13.3	9.4

MODEL	EPOS 3/3 60KL	EPOS 3/3 80KL	EPOS 3/3 100KL	EPOS 3/3 120KL	EPOS 3/3 160KL	EPOS 3/3 200KL
PHASE	3-phase in/3-phase out with Netural					
CAPACITY	60kVA / 60kW	80kVA / 80kW	100KVA / 90KW	120KVA / 108KW	160KVA / 144KW	200KVA / 180KW
PARALLEL CAPABILITY	3		2			
INPUT						
Nominal Voltage	3 x 400 VAC (3Ph+N)					
Voltage Range	190-520 VAC @ 50% load 305-478 VAC @ 100% load		208-478 VAC(3-phase) @ 50% load 305-478 VAC(3-phase) @ 100% load			
Frequency Range	46~54Hz or 56~64Hz		40~70Hz or 56~64Hz			
Power Factor	≥ 0.99 @ 100% load					
OUTPUT						
Output Voltage	3 x 360*/380/400/415 VAC (3Ph+N)		3 x 380*/400/415 VAC (3Ph+N)			
AC Voltage Regulation (Batt. Mode)	± 1%					
Frequency Range (Synchronized Range)	46~54Hz or 56~64Hz					
Frequency Range (Batt. Mode)	50 Hz ± 0.1 Hz or 60 Hz ± 0.1 Hz					
Current Crest Ratio	3:1 (max.)					
Harmonic Distortion	≥ 2 % @100% Linear Load; ≥ 5 % @100% Non-linear Load		≥ 2 % THD @100% Linear Load; ≥ 4 % THD @100% Non-linear Load			
Transfer Time	AC Mode to Batt. Mode		Zero			
	Inverter to Bypass		Zero			
Waveform (Batt. Mode)	Pure Sine wave					
Overload	AC Mode	100-110% for 60 min, 110-125% for 10 min, 125%~150% for 1min, >150% immediately	105-110% for 60 min, 111-125% for 10 min, 126%~150% for 1min, >150% immediately			
	Battery Mode	100-110% for 60 min, 110-125% for 10 min, 125%~150% for 1min, >150% immediately	105-110% for 60 min, 111-125% for 10 min, 126%~150% for 1min, >150% immediately			
EFFICIENCY						
AC Mode	95.5%		94%			
ECO Mode	98.5%		98.5%			
Battery Mode	94.5%		93.0%			
BATTERY						
Long-run Model	Battery Type	Depending on the capacity of external batteries				
	Numbers	32 ~ 40 PCS				
	Charging Current (max.)	2.0~24.0A (Adjustable)	24A	32A	40A	48A
	Charging Voltage	+/-13.65 VDC* N ± 1% (N = 10)		+/-13.7V*N (N=16~20)		
INDICATORS						
LCD Display	UPS status, Load level, Battery level, Input/Output voltage, Discharge timer, and Fault conditions					
PHYSICAL						
Long-run Model	Dimension, D x W x H (mm)	790 x 360 x 1010		940 x 567 x 1050		1040 x 567 x 1452
	Net Weight (kgs)	46,5	46,5	28	43	60
ENVIRONMENT						
Operation Temperture	0-40°C					
Operation Humidity	< 95% and non-condensing					
Noise Level	Less than 75dB @ 1 Meter		Less than 70dB @ 1 Meter		Less than 73dB @ 1 Meter	
MANAGEMENT						
Smart RS-232 / USB	Supports Windows® 2000/2003/XP/Vista/2008, Windows® 7/8/10, Linux and MAC					
Optional SNMP	Power management from SNMP manager and web browser					

*If output voltage is set as 3 x 360VAC, the output power of the unit will be de-rated to 90%.
Product specifications are subject to change without further notice.

